

## 321dive - Puerto Del Carmen diving

### Dive Sites

Please note that you will not necessarily dive all of the dive sites below. Potentially obvious factors such as the ability of divers, adverse weather conditions and dive site traffic may prohibit dive groups diving at their site of choice. The Dive Club will always try to cater for the requests of the school, but 321dive asks that the professional instructors' decisions are respected.

#### The Cathedral - Shore Dive

The Cathedral is accessed from the beach (Playa de la Barrilla). It is a short surface swim out of the bay and then a free descent to approx. 14m. We follow along the reef to the left and over a drop-off which leads down to the 'Cathedral' at approximately 30 metres. The 'Cathedral' is a large underwater lava cave, which funnels down towards the rear. There are alcoves of finger coral and small shrimp and glass fish at the far end and there are many soft corals on the cave walls and roof. Grouper fish are very often found there. This is also a regular hang out for some beautiful trumpet fish. Torches are recommended to explore the cave to full advantage.



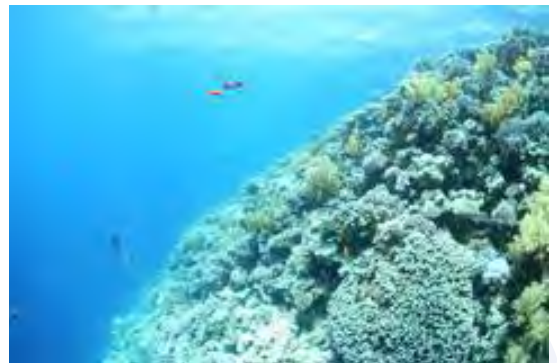
#### The House Reef - Shore Dive

The House Reef is accessed via the beach or the jetty with a short surface swim, followed by a free descent to approximately 12 metres. At this point the dive runs along the end of the protected bay with overhangs on either side. The bottom contours can be followed to a depth of approximately 25 metres. There are a variety of fish to be spotted including grouper, barracuda, angelshark, and rays. Large shrimps, globular anemone, arrowhead crabs and octopus can also be found. This is why it also makes for an interesting dive that can be done several times, with varying experiences everytime.



## The Harbour Wall - Shore Dive

The Harbour Wall is a very interesting dive both by day & by night. It begins from the bay or from the jetty and you submerge into a shallow entry which leads leisurely to 24m at its furthest point. For orientation and navigation purposes the rocks and the harbour wall are kept to the right on the outbound with the reverse simply true for the return. At night the bay takes on a different character; fields of anemones burst from the normally featureless sandy bottom and cuttlefish, octopus, sea horses, spider crab and small shrimps can be found along the small harbour wall. During the day there is an abundance of many different fish & marine life species - a great dive, ideal for those wanting to take their time and photograph the little creatures!



## Old Harbour Wrecks - Boat Dive

This site has been designated a marine conservation site and features a well established wreck site supporting a vast quantity of marine life - sardines, pinfish, turkish wrasse, emperor fish, arrow crabs, large groupers, barracuda and sometimes visited by large rays, tuna and angelsharks. The short boat trip from the harbour takes divers to a buoy directly above a trawler wreck at 18 metres. We descend down the line to the forward mast and from there to the bottom. This wreck still has a two metre brass propeller intact. If you follow the edge of the reef down you'll find other wrecks which range from a wooden crushed wreck at 24 metres to a skeletal fishing boat at around 37 metres. There are approximately eight wrecks together in the area and the site can be dived several times to explore its entirety.

## Red Coral - Shore Dive

Red Coral starts with a surface swim with a free descent to approx.16 metres, then follow the reef along a drop off which leads to a small lava alcove, which is where you will see the rare pink coral at the rear. Small glass like shrimps are also found in this area. There is a great deal of fish activity here, especially in the mornings, a regular spot for trigger fish, fusiliers, barracuda and shoals of sardines and other small fish.

## Richie's Reef - Boat Dive

Richie's Reef starts with a ride past the Fariones Reef, heading out to the outer side of the buoyed area

of the long beach at Puerto del Carmen. Mooring on one of the large buoys, you free descend to 18 metres. The area is an interesting flat-walled reef with outcrops of boulders and plenty of recesses for fish life. The contours take divers down to approx 35 metres. There is a good variety of fish to be seen - some very large groupers, morays, barracuda and octopus.



## **The Blue Hole - Shore Dive**

The Blue Hole is accessed by a jump entry from the jetty and followed by a swim out to the entry point. You free descend down to about 12 - 14 metres to where the Blue Hole commences. The Hole is 2-3 metres wide and deep and leads from about 18 metres down, through the reef and out the other side at around 25 metres into the deep blue waters of the Atlantic. There is a very noticeable thermocline at the transition between the two as the reef drops to around 35 metres in depth on the Atlantic side. The site is visited by barracuda, grouper and angelshark. A torch is well worth bringing on this dive to explore the inner walls of the Hole.

## **Punta Tinoso New Wrecks - Boat Dive**

Punta Tinoso Wrecks are a little further on from the Punta Tinoso Reef. Here we have three recently placed fishing boats which are constantly gathering more and more marine life. Free descend or follow the anchor line to the first wreck which lies at around 16m. Having explored this, you can proceed to the others and also take the time to explore the lava rock for octopus, amongst other species. Although this is a newer site, it is improving by the day and well worth a visit.



## The Pinnacle- Shore Dive

This site is accessed from the jetty via a surface swim and lies just beyond the Blue Hole. It is a large lava formation rising from the sea bed. You dive around it, and maintaining your buoyancy, you can look down many metres to the sea bed, often glimpsing the rays and angelsharks on their travels. You then come back to the edge of the reef and proceed back to the exit point.

